

# The CHILD-BRIGHT Network Knowledge Mobilization Program

Authors: A. Zerbo, R. Cardoso, S. Yamaguchi, L. Nguyen, M. Gonzalez, J. Hanson, G. Backlin, H. Dupuis, P. Yoo, Z. Boychuck, J. Mosel, A. Gitterman, J. Lai, C. Marcotte, P. Robeson, P. Bush, M. Elsabbagh, J. Weiss, C. Putterman, S. Glegg, K. Shikako

## MANDATE

- The Knowledge Mobilization (KM) Program facilitates the uptake, use, and impact of Network-driven evidence in patient-oriented (POR) and childhood brain-based developmental disability (BDD) research.

## GOVERNANCE

- KM Program Co-leads (a parent-partner and two researchers).
- KM Committee (patient-partners (caregivers and youth), researchers, trainees, clinicians, and policymakers).

## OBJECTIVES

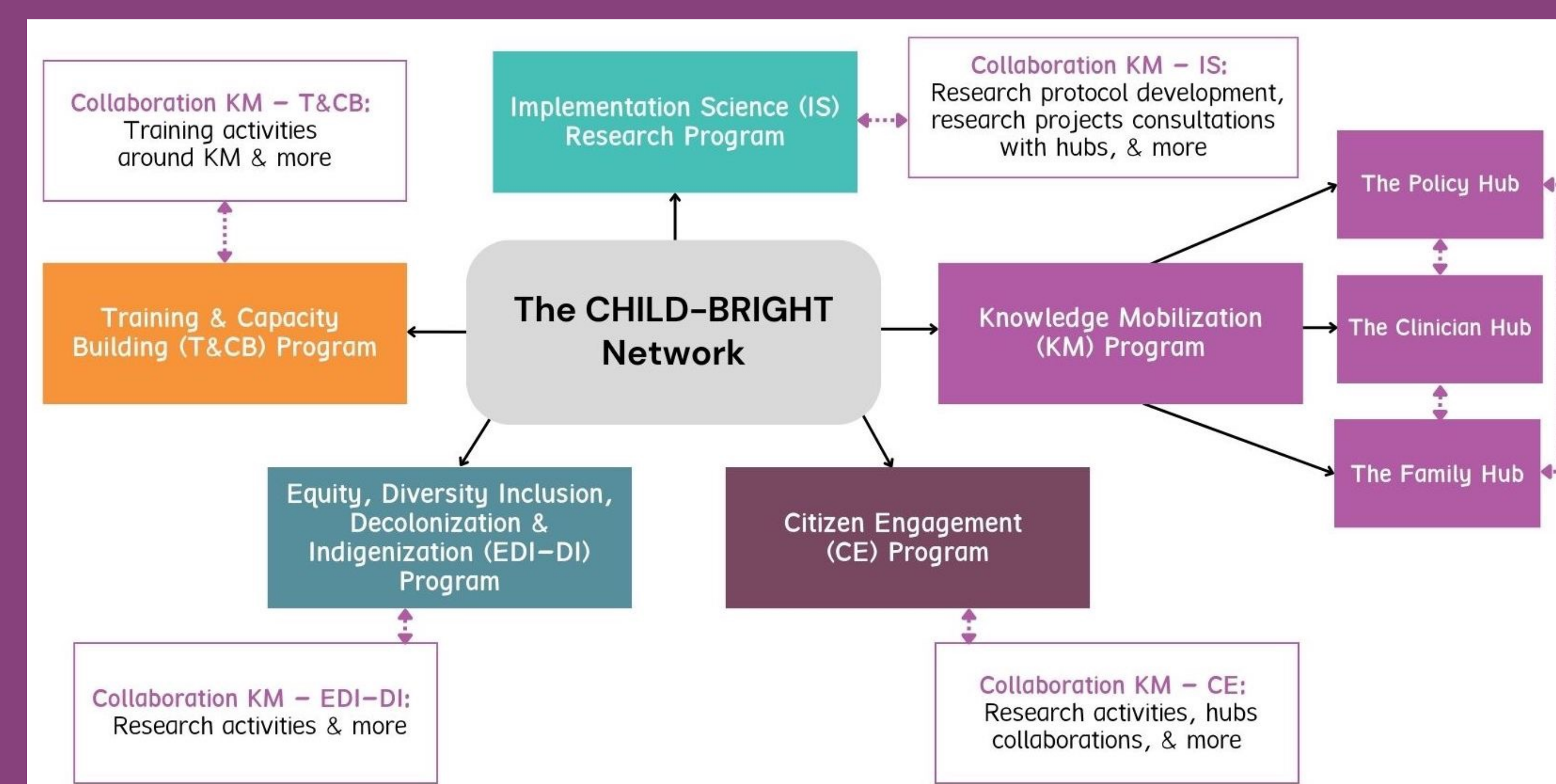
- Objective 1: Develop network hubs to support knowledge exchange.
- Objective 2: Support KM best practices within the network.
- Objective 3: Advance the science of patient-oriented KM.

## PROGRAM ACTIVITIES

- **Network hubs**
  - **Goals of the hubs:**
    - To provide guidance to the CHILD-BRIGHT Network research projects on KM approaches and ideas.
    - To establish, strengthen, and sustain connections between CHILD-BRIGHT and the broader childhood disability community to support KM.
- **The Family Hub:**  
Objective: To develop family- and patient-oriented KM strategies and tools.
- **The Clinician Hub:**  
Objective: To mobilize knowledge to clinicians and healthcare leaders across Canada.
- **The Policy Hub:**  
Objective: To mobilize knowledge between policy and research in areas related to BDD.

The CHILD-BRIGHT Network Knowledge Mobilization Program works collaboratively with the network research projects and programs (see Figure 1) and partners with families, community organizations, policymakers, and clinicians to facilitate the uptake, use, and impact of evidence-informed knowledge for children with disabilities and their families.

Figure 1: The KM Program within the CHILD-BRIGHT Network



## PROGRAM ACTIVITIES (cont'd)

- The KM Program products and resources



Webinars



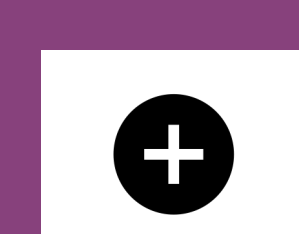
Podcasts



Dialogues



Publications



& more



### The KT Library

The library includes products created by the CHILD-BRIGHT Network (e.g., scientific publications, infographics, training resources, and more). The "EzLibrary" is a section of the library that features lay language summaries of publications produced by the CHILD-BRIGHT research community.

VISIT THE KT LIBRARY: [www.child-bright.ca/kt-library](http://www.child-bright.ca/kt-library)



Take a picture to visit our website

## PROGRAM ACTIVITIES (cont'd)

- List of the **research studies** we're conducting in collaboration with other CHILD-BRIGHT programs:
  - **Social Network Analysis**  
Goal: To identify and leverage knowledge pathways within and outside the network.
  - **Critical Ethical Engagement of YOUTH in patient-oriented research (CEE you!)**  
Goal: To co-create youth engagement training resources with youth with a BDD.
  - **Case study on CHILD-BRIGHT's Knowledge Translation Innovation Incubator (KTII)**  
Goal: To investigate the process of generating innovation in integrated KT research in the context of the CHILD-BRIGHT Phase I KTII grant competition.
  - **KM Program Evaluation**  
Goal: To assess the process and outcomes of the KT Program activities in Phase I and II.
  - **Stakeholder Engagement in the CHILD-BRIGHT Network Study**  
Goal: To better understand patient engagement and its impacts within CHILD-BRIGHT.
  - **Enhancing the Engagement of Families with Low Income in Research**  
Goal: To better understand how best to engage low-income families of children with disabilities as patient-partners in research.
  - **Supporting Parent-partners in the CHILD-BRIGHT Patient-oriented Research Network through a Parent Peer Mentor**  
Goal: To learn about the experience of patient-partners in CHILD-BRIGHT and the value of parent peer mentorship.
  - **Evaluating stakeholder engagement in the CHILD-BRIGHT SPOR Network**  
Goal: To develop a framework that identifies and maps indicators of engagement in the CHILD-BRIGHT Network and other *Strategy for POR* networks.