

Engaging hard-to-reach populations in childhood disability research

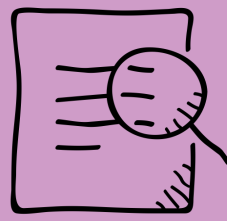


Why are we doing this?

Lack of research on the process of engagement in childhood disability (particularly hard-to-reach populations)



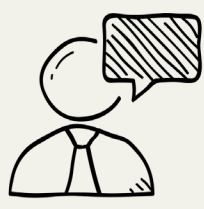
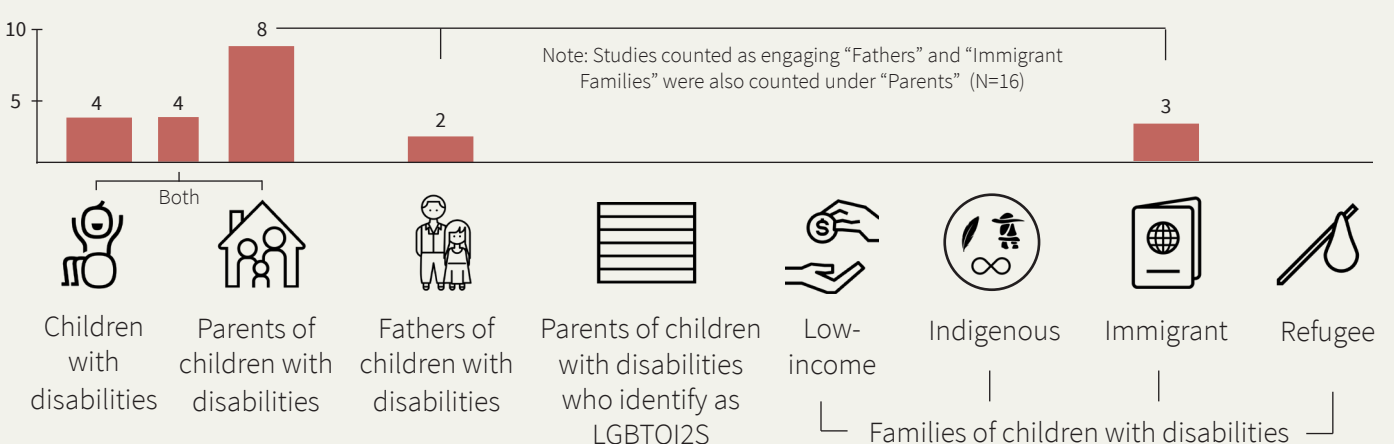
What is the purpose?



Identify strategies used to engage hard-to-reach populations and how they were evaluated

What were the main findings?

STUDIES ADDRESSING HARD-TO-REACH POPULATIONS IN CHILDHOOD DISABILITY

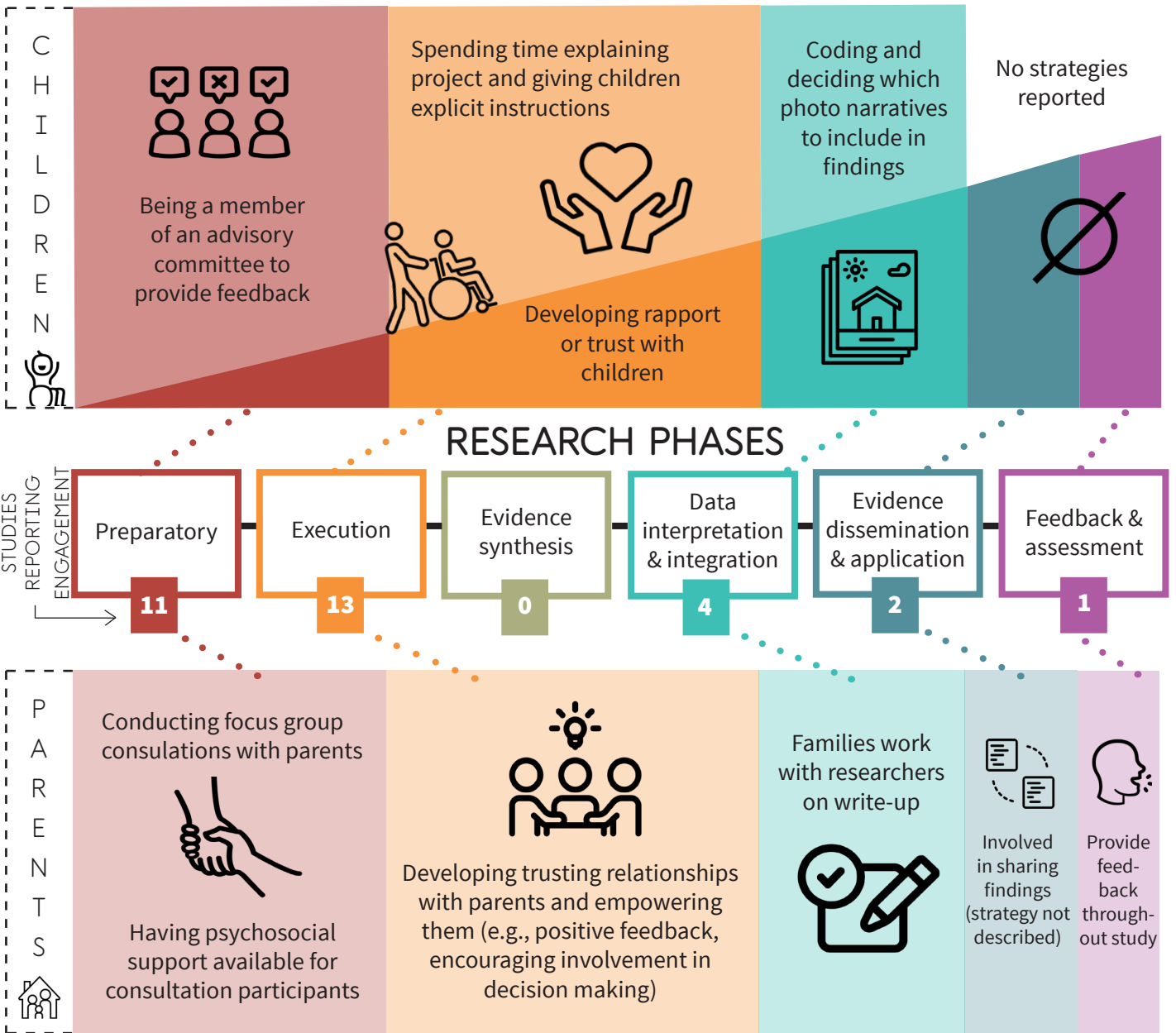


Only anecdotal evidence was used to report evaluation of engagement strategies and outcomes



Engagement was more common in the early stages of the research process

What engagement strategies were used?



What does our parent-partner recommend?

FOR PARENT-PARTNERS

- Understand the research phase they will be engaging in
- Think about the research phase where they would like to contribute
- Ask questions about time commitment and expected contribution at each phase

FOR RESEARCHERS

- Be open to different means of communication
- Identify tasks for parent-partners at each stage of the process
- Share information about each research phase and their importance

What are the next steps?



Systematically report and examine effectiveness of engagement strategies and outcomes



Use quantitative and mixed methods approaches to study engagement



Develop strategies to engage hard-to-reach populations

